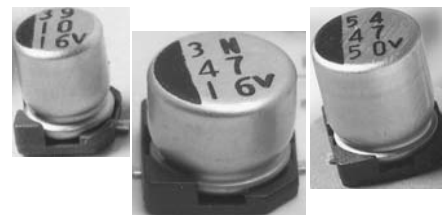


### FEATURES

- Cylindrical leadless type for surface mounting.
- Very low impedance at 100KHz.
- Wide temperature (-55°C ~ +105°C).
- Maximum 5.5mm height.
- Solvent resistant (2 minutes).
- Designed for automatic mounting and reflow soldering.



### PART NUMBERING

Part Number Example: MXZ-016/100M4X5TR13F

MXZ	-	016	/	100	M	4X5	TR	13	F
Type		Rated DC Voltage		Capacitance Code (μF)*	Tolerance Code	Size	Package Code**	Reel Size	RoHs Compliant

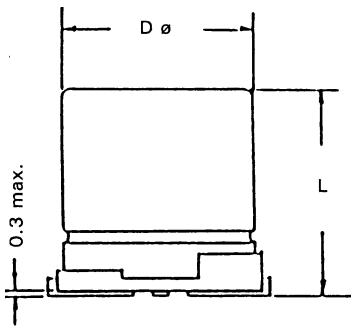
\* Capacitance Code: First two digits represent significant figure, third digit represents multiplier (number of zeros).  
 \*\* Package Code: TR = Tape & Reel.

### SPECIFICATIONS

Performance Characteristics		
Operating Temperature Range	-55°C ~ +105°C.	
Temperature Characteristics (120Hz)	Impedance Ratio	
	Rated Voltage (WVDC)	6.3   10   16   25   35   50
	Z (-40°C) / Z (+20°C)	3   2   2   2   2   2
	Z (-55°C) / Z (+20°C)	5   4   4   3   3   3
Voltage Range	6.3VDC ~ 50VDC.	
Surge Voltage (20°C, 120Hz)	VDC   8   13   20   32   44   63	
Capacitance Range	0.47μF ~ 150μF.	
Capacitance Tolerance	±10% & ±20%.	
Maximum Dissipation Factor (20°C, 120Hz)	Rated Voltage (WVDC)	6.3   10   16   25   35   50
	DF %	24   20   16   14   12   10
Maximum Leakage Current (20°C) (after 2 minutes)	0.01CV or 3μA, whichever is greater.	
Load Life Test (105°C, 2000 hours)	Capacitance Change	Within ±25% of initial measured value.
	DF	Less than 200% of specific value.
	Leakage Current	Less than specified value.

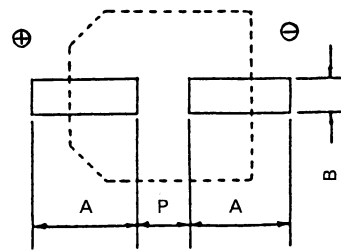
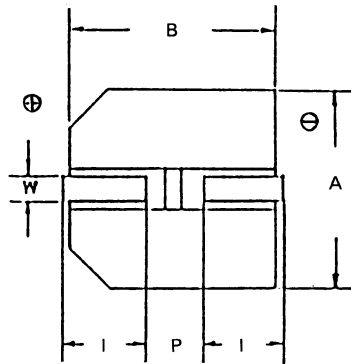
### STANDARD PRODUCT TABLE (dØ X L(mm))

Capacitance (μF)	WVDC					
	6.3	10	16	25	35	50
0.47					4 x 5.5	4 x 5.5
1.0					4 x 5.5	4 x 5.5
2.2					4 x 5.5	4 x 5.5
3.3					4 x 5.5	4 x 5.5
4.7				4 x 5.5	4 x 5.5	5 x 5.5
10			4 x 5.5	5 x 5.5	5 x 5.5	6.3 x 5.5
22	4 x 5.5	5 x 5.5	5 x 5.5	6.3 x 5.5	6.3 x 5.5	
33	5 x 5.5	5 x 5.5	6.3 x 5.5	6.3 x 5.5		
47	5 x 5.5	6.3 x 5.5	6.3 x 5.5			
100	6.3 x 5.5	6.3 x 5.5	6.3 x 5.3			
150	6.3 x 5.5					



### DIMENSIONS (mm)

Case Size	dØ ± 0.5	L Max.	A ± 0.2	B ± 0.2	1 ± 0.2	W	P ± 0.2
4 x 5.5	4.0	5.5	4.3	4.3	1.8	0.5 ~ 0.8	1.0
5 x 5.5	5.0	5.5	5.3	5.3	2.1	0.5 ~ 0.8	1.4
6.3 x 5.5	6.3	5.5	6.6	6.6	2.5	0.5 ~ 0.8	2.2



### RECOMMENDED LAND PATTERN (mm)

Case Size	A	B	P
4 x 5.5	2.5	1.6	1.0
5 x 5.5	2.7	1.6	1.4
6.3 x 5.5	3.1	1.6	2.2

### MAXIMUM RIPPLE (mA rms @ 120Hz & 105°C)

Cap. (µF)	VVDC					
	6.3	10	16	25	35	50
0.47					45	30
1.0					60	37
2.2					60	45
3.3					60	52
4.7				60	60	75
10			60	95	95	120
22	60	95	95	140	140	
33	95	95	140	140		
47	95	140	140			
100	140	140	140			
150	140					

### MAXIMUM IMPEDANCE (Ω AT 20°C & 100KHZ)

Cap. (µF)	VVDC					
	6.3	10	16	25	35	50
0.47					6.5	8.0
1.0					3.6	7.4
2.2					3.6	6.6
3.3					3.6	5.4
4.7				3.6	3.6	2.9
10			3.6	1.5	1.5	1.3
22	3.6	1.5	1.5	0.8	0.8	
33	1.5	1.5	0.8	0.8		
47	1.5	0.8	0.8			
100	0.8	0.8	0.8			
150	0.7					