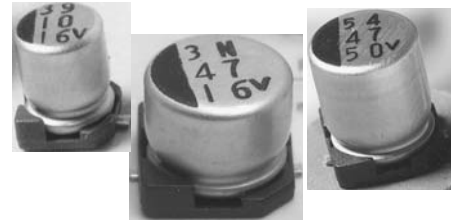


### FEATURES

- Cylindrical leadless type for surface mounting.
- Low leakage current.
- Anti-solvent (2 minutes).
- Designed for automatic mounting and reflow soldering.
- RoHs Compliant



### PART NUMBERING

Part Number Example: MXML-016/100M4X5TR13F									
MXML	-	016	/	100	M	4X5	TR	13	F
Type		Rated DC Voltage		Capacitance Code (μF)*	Tolerance Code	Size	Package Code**	Reel Size	RoHs Compliant

\* Capacitance Code: First two digits represent significant figure, third digit represents multiplier (number of zeros).  
 \*\* Package Code: TR = Tape & Reel.

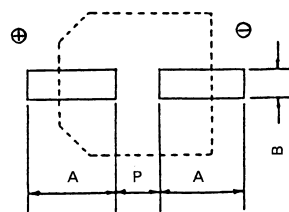
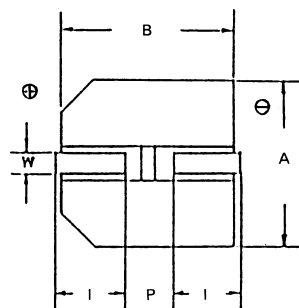
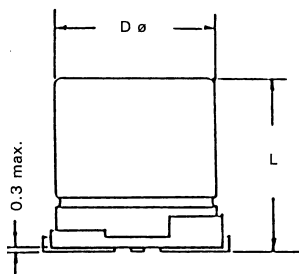
### SPECIFICATIONS

Performance Characteristics							
Operating Temperature Range	-40°C ~ +85°C.						
Temperature Characteristics (120Hz)	Impedance Ratio						
	Rated Voltage (WVDC)	6.3	10	16	25	35	50
	Z (-25°C) / Z (+20°C)	4	3	2	2	2	2
	Z (-40°C) / Z (+20°C)	8	6	4	4	3	3
Voltage Range	6.3VDC ~ 50VDC.						
Surge Voltage (20°C, 120Hz)	VDC	8	13	20	32	44	63
Capacitance Range	0.1μF ~ 330μF.						
Capacitance Tolerance	±20%.						
Maximum Dissipation Factor (20°C, 120Hz)	Rated Voltage (WVDC)	6.3	10	16	25	35	50
	DF %	26	22	18	16	14	12
Maximum Leakage Current (20°C) (after 2 minutes)	0.002CV or 0.4μA, whichever is greater.						
Load Life Test (85°C, 1000 hours)	Capacitance Change	Within ±25% of initial measured value.					
	DF	Less than 200% of specific value.					
	Leakage Current	Less than specified value.					

### STANDARD PRODUCT TABLE (DØ X L(mm))

MF D	6.3 VDC		10 VDC		16 VDC		25 VDC		35 VDC		50 VDC	
	SIZE	I RMS	SIZE	I RMS	SIZE	I RMS	SIZE	I RMS	SIZE	I RMS	SIZE	I RMS
.10											4 X 5.5	1
.22											4 X 5.5	2
.33											4 X 5.5	2.8
.47											4 X 5.5	4
1											4 X 5.5	8.4
2.2									4 X 5.5	8.4	4 X 5.5	13
3.3							4 X 5.5	10	4 X 5.5	15	4 X 5.5	17
4.7					4 X 5.5	10	4 X 5.5	16	4 X 5.5	18	6.3X5.5	20
10	4 X 5.5	15	4 X 5.5	23	4 X 5.5	23	4 X 5.5	27	6.3X5.5	29	6.3X5.5	33
22	4 X 5.5	28	4 X 5.5	33	5 X 5.5	37	5 X 5.5	42	6.3X5.5	46	6.3X7.7	48
											8 X 6.5	52
33	4 X 5.5	37	5 X 5.5	41	6.3X5.5	49	6.3X5.5	52	6.3X7.7	58	6.3X7.7	66
									8 X 6.5	62	8 X 6.5	71
47	4 X 5.5	45	6.3X5.5	52	6.3X5.5	58	6.3X7.7	65	6.3X7.7	75		
							8 X 6.5	70	8 X 6.5	80		
100	5 X 5.5	70	6.3X7.7	75	6.3X7.7	85	6.3X7.7	102				
			8 X 6.5	80	8 X 6.5	92	8 X 6.5	110				
220	6.3X7.7	102	6.3X7.7	125								
	8 X 6.5	110	8 X 6.5	135								
330	6.3X7.7	155										
	8 X 6.5	170										

IAC (RIPPLE CURRENT) MAX @ 85 ° C 120Hz



**RECOMMENDED LAND PATTERN**

Case Size	A	B	P
$D \pm 0.5 \times L \text{ max}$			
4 x 5.5	2.6	1.8	1.0
5 x 5.5	3.0	1.8	1.4
6.3 x 5.5	3.5	1.8	2.1
6.3 x 7.7	3.5	1.8	2.1
8 x 6.5	4.1	2.1	2.8

**DIMENSIONS (mm)**

DIAMETER $\pm 0.5$	L MAX	A $\pm 0.2$	B $\pm 0.2$	I $\pm 0.1$	W	P
4	5.5	4.3	4.3	1.95	0.5~0.8	1.0
5	5.5	5.3	5.3	2.25	0.5~0.8	1.4
6.3	5.5	6.6	6.6	2.5	0.5~0.8	2.2
6.3	7.5	6.6	6.6	2.5	0.5~0.8	2.2
8	6.5	8.3	8.3	3.35	0.5~0.8	2.3

**RIPPLE CURRENT CORRECTION FACTOR**

Frequency (Hz)	60 (50)	120	500	1K	$\geq 10\text{KHz}$
Correction Factor	0.8	1.0	1.1	1.15	1.2