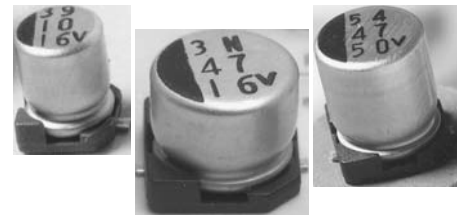


## FEATURES

- Cylindrical leadless type for surface mounting.
- High voltage.
- Wide temperature (-40°C ~ +105°C).
- Long life, 2000 hours at 105°C.
- Solvent resistant (2 minutes).
- Designed for automatic mounting and reflow soldering.



## PART NUMBERING

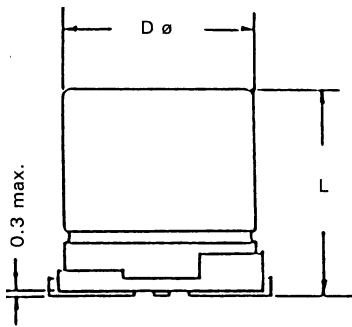
Part Number Example: MXMH-200/100M10X10TR13F									
MXMH	-	200	/	100	M	10X10	TR	13	F
Type		Rated DC Voltage		Capacitance Code (μF)*	Tolerance Code	Size	Package Code**	Reel Size	RoHs Compliant
* Capacitance Code: First two digits represent significant figure, third digit represents multiplier (number of zeros).									
** Package Code: TR = Tape & Reel.									

## SPECIFICATIONS

Performance Characteristics					
Voltage Range		160	200	250	400
Operating Temperature Range	-40°C ~ +105°C.				
Capacitance Tolerance	±20%.				
Maximum Dissipation Factor % (20°C,		20			25
Leakage current μA (max) After 2 minutes	CV ≤1000: 0.03CV+15 CV >1000: 0.02CV+25				
Impedance ratio @ 120Hz (max)	Z (-25°C) / Z (+20°C)	3	3	3	6
	Z (-40°C) / Z (+20°C)	6	6	6	10
Load Life Test (105°C with rated voltage applied)	Test	8mm Diam. 1000Hrs, 10~16mm diam. 2000Hrs			
	Capacity Change	Within ±25% of initial measured value			
	DF	Less than 200% of specific value.			
	Leakage current	Less than specified value.			

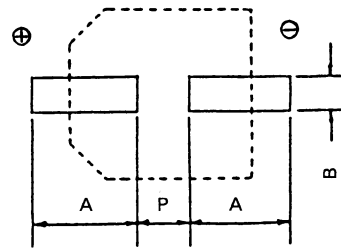
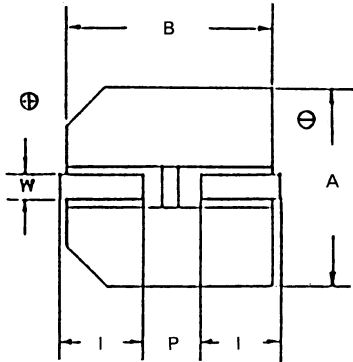
## STANDARD PRODUCT TABLE

Capacitance (μF)	VVDC			
	160	200	250	400
2.2				8x10.5
3.3			8x10.5	10x10.5
4.7			8x10.5	10x10.5
6.8			8x10.5	12.5x13.5
10	8x10.5	10x10.5	10x10.5	12.5x13.5
22	12.5x13.5	12.5x13.5	12.5x13.5	16x16.5
33	12.5x13.5	12.5x13.5	16x16.5	
47	16x16.5	16x16.5	16x16.5	
68	16x16.5	16x16.5		
82	16x16.5			



**DIMENSIONS (mm)**

Case Size	dØ ± 0.5	L Max.	A ± 0.2	B ± 0.2	l ± 0.2	W	P ± 0.2
8x10.5	8	10.8	8.3	8.3	2.9	0.7 ~ 1.0	3.2
10 x 10.5	10	10.8	10.3	10.3	3.2	1.1 ~ 1.4	4.6
12.5 x 13.5	12.5	14	12.8	12.8	4.5	1.1 ~ 1.4	4.6
16 x 16.5	16	17	16.3	16.2	5.5	1.8 ~ 2.1	7.0



**RECOMMENDED LAND PATTERN (mm)**

Case Size	A	B	P
8x10.5	4.1	2.1	2.8
10 x 10.8	4.4	1.9	4.3
12.5 x 14	5.7	1.9	4.5
16 x 17	6.7	2.5	6.4

**MAXIMUM RIPPLE (mA rms @ 120Hz & 105°C)**

ap. (µF)	WVDC			
	160	200	250	400
2.2				25
3.3			31	36
4.7			37	38
6.8			44	47
10	7	64	64	57
22	112	112	112	115
33	137	137	150	
47	180	180	180	
68	215	215		
8.2	235			