

CAPACITANCE TOLERANCES

NPO: F = ±1%, J = ±5%, K = ±10%.
 X7R: J = ±5%, K = ±10%, M = ±20%.
 Z5U: M = ±20%, Z = +80%, -20%.
 Y5V: M = ±20%, Z = +80%, -20%.

Case		01	02	03
EIA/TC	WVDC	Capacitance Range (pF, EIA)		
NPO	100	100 - 151		
	50	100 - 332	472 - 103	
X7R	100	221 - 103		
	50	221 - 104	154 - 224	334 - 105
Z5U	50	103 - 334	474	684 - 105
Y5V	50		105	
	16	105 - 335		

PART NUMBERING

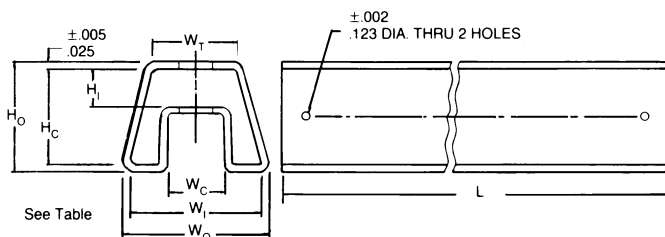
Part Number Example: **CMD-050/104KX10TF**

CMD	-	050	/	104	K	X	10	T	F
Type		Rated DC Voltage		Capacitance Code (pF)*	Tolerance Code	Dielectric Material**	Case Size	Package Code***	RoHs Compliant

* Capacitance Code: First two digits represent significant figures, third digit represents multiplier (number of zeros).
 ** Dielectric Material: N = NPO, X = X7R, Z = Z5U.
 *** Package Code: TR = Tape & Reel, TA = Tape & Ammo, B = Bulk.

Case	Length (L)	Height (H ₁)	Height (H ₂)	Thickness
01	0.260 ± 0.020 (6.60)	0.135 maximum (3.43)	0.165 maximum (4.19)	0.100 maximum (2.54)
02	0.260 ± 0.020 (6.60)	0.165 maximum (4.19)	0.200 maximum (5.08)	0.100 maximum (2.54)
03	0.260 ± 0.020 (6.60)	0.290 maximum (7.37)	0.320 maximum (8.13)	0.100 maximum (2.54)

Standard Packaging: 200 pieces per slide pack.



	*01	02	03
(H ₀) Overall Height	0.400 ref.	0.430 ref.	0.545 ref.
(H _c) Channel Height	0.141 ± 0.006	0.171 ± 0.006	0.295 ± 0.010
(H ₁) Inside Height	0.350	0.380	0.495
(W ₀) Overall Width	0.540 ref.	0.540 ref.	0.600 ref.
(W ₁) Inside Width	0.490	0.490	0.550
(W _c) Channel Width	0.210	0.210	0.170
(W _T) Top Width	0.350	0.310	0.300
(L) Length	20.073 ± 0.06	20.073 ± 0.06	20.073 ± 0.06