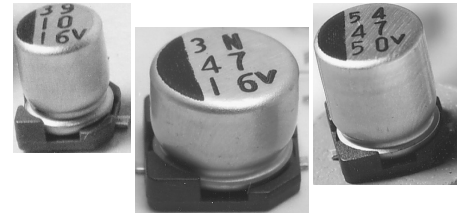


FEATURES

- Cylindrical leadless type for surface mounting.
- High voltage.
- Wide temperature (-40°C ~ +105°C).
- Long life, 2000 hours at 105°C.
- Solvent resistant (2 minutes).
- Designed for automatic mounting and reflow soldering.



PART NUMBERING

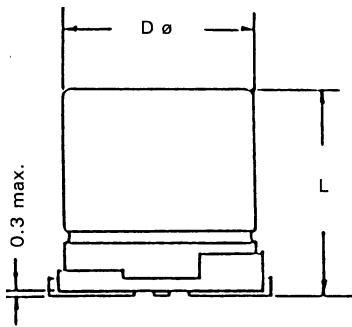
Part Number Example: MXMH-200/100M10X10TR13F									
MXMH	-	200	/	100	M	10X10	TR	13	F
Type		Rated DC Voltage		Capacitance Code (μF)*	Tolerance Code	Size	Package Code**	Reel Size	RoHs Compliant
* Capacitance Code: First two digits represent significant figure, third digit represents multiplier (number of zeros).									
** Package Code: TR = Tape & Reel.									

SPECIFICATIONS

Performance Characteristics			
Operating Temperature Range	-40°C ~ +105°C.		
Temperature Characteristics (120Hz)	Impedance Ratio		
	Rated Voltage (WVDC)	200	400
	Z (-40°C) / Z (+20°C)	3	6
	Z (-40°C) / Z (+20°C)	6	10
Voltage Range	200 & 400VDC.		
Capacitance Range	4.7μF ~ 68μF; 3.3μF ~ 22μF.		
Capacitance Tolerance	±20%.		
Maximum Dissipation Factor (20°C, 120Hz)	Rated Voltage (WVDC)	200	400
	DF %	20	25
Load Life Test (105°C, 2000 hours)	Capacitance Change	Within ±25% of initial measured value.	
	DF	Less than 200% of specific value.	
	Leakage Current	Less than specified value.	

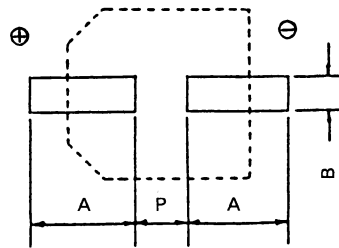
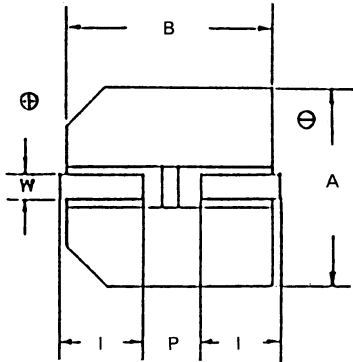
STANDARD PRODUCT TABLE

Capacitance (μF)	WVDC	
	200	400
3.3		10 x 10.8
4.7	10 x 10.8	10 x 10.8
6.8		12.5 x 14
10	10 x 10.8	12.5 x 14
22	12.5 x 14	16 x 17
33	12.5 x 14	
47	16 x 17	
68	16 x 17	



DIMENSIONS (mm)

Case Size	dØ ± 0.5	L Max.	A ± 0.2	B ± 0.2	l ± 0.2	W	P ± 0.2
10 x 10.8	10	10.8	10.3	10.3	3.2	0.7 ~ 1.0	4.6
12.5 x 14	12.5	14	12.8	12.8	4.5	1.1 ~ 1.4	4.8
16 x 17	16	17	16.3	16.5	5.5	1.8 ~ 2.1	6.7



RECOMMENDED LAND PATTERN (mm)

Case Size	A	B	P
10 x 10.8	4.4	1.9	4.3
12.5 x 14	5.7	1.9	4.5
16 x 17	6.7	2.5	6.4

MAXIMUM RIPPLE (mA rms @ 120Hz & 105°C)

Cap. (µF)	VVDC	
	200	400
3.3		36
4.7	64	36
6.8		47
10	64	47
22	112	115
33	112	
47	215	
68	215	

MAXIMUM ESR (Ω @ 120Hz & 20°C)

Cap. (µF)	VVDC	
	200	400
3.3		126
4.7	70.5	88.1
6.8		61
10	33.1	41.5
22	15.1	18.9
33	10	
47	7	
68	4.9	

MAXIMUM LEAKAGE CURRENT (µA 2 MIN., 20°C)

Cap. (µF)	VVDC	
	200	400
3.3		51
4.7	43	63
6.8		96
10	65	135
22	147	279
33	213	
47	297	
68	423	