

CAPACITANCE TOLERANCES

NPO: F = ±1%, J = ±5%, K = ±10%.
 X7R: J = ±5%, K = ±10%, M = ±20%.
 Z5U: M = ±20%, Z = +80%, -20%.
 Y5V: M = ±20%, Z = +80%, -20%.

| Case | | 01 | 02 | 03 |
|--------|------|-----------------------------|-----------|-----------|
| EIA/TC | WVDC | Capacitance Range (pF, EIA) | | |
| NPO | 100 | 100 - 151 | | |
| | 50 | 100 - 332 | 472 - 103 | |
| X7R | 100 | 221 - 103 | | |
| | 50 | 221 - 104 | 154 - 224 | 334 - 105 |
| Z5U | 50 | 103 - 334 | 474 | 684 - 105 |
| Y5V | 50 | | 105 | |
| | 16 | 105 - 335 | | |

PART NUMBERING

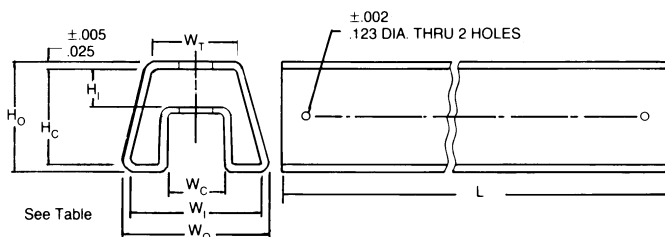
Part Number Example: **CMD-050/104KX10TF**

| CMD | - | 050 | / | 104 | K | X | 10 | T | F |
|------|---|------------------|---|------------------------|----------------|-----------------------|-----------|-----------------|----------------|
| Type | | Rated DC Voltage | | Capacitance Code (pF)* | Tolerance Code | Dielectric Material** | Case Size | Package Code*** | RoHs Compliant |

* Capacitance Code: First two digits represent significant figures, third digit represents multiplier (number of zeros).
 ** Dielectric Material: N = NPO, X = X7R, Z = Z5U.
 *** Package Code: TR = Tape & Reel, TA = Tape & Ammo, B = Bulk.

| Case | Length (L) | Height (H ₁) | Height (H ₂) | Thickness |
|------|-------------------------|--------------------------|--------------------------|-------------------------|
| 01 | 0.260 ± 0.020 (6.60) | 0.135 maximum (3.43) | 0.165 maximum (4.19) | 0.100 maximum (2.54) |
| 02 | 0.260 ± 0.020 (6.60) | 0.165 maximum (4.19) | 0.200 maximum (5.08) | 0.100 maximum (2.54) |
| 03 | 0.260 ± 0.020 (6.60) | 0.290 maximum (7.37) | 0.320 maximum (8.13) | 0.100 maximum (2.54) |

Standard Packaging: 200 pieces per slide pack.



| | *01 | 02 | 03 |
|----------------------------------|---------------|---------------|---------------|
| (H _o) Overall Height | 0.400 ref. | 0.430 ref. | 0.545 ref. |
| (H _c) Channel Height | 0.141 ± 0.006 | 0.171 ± 0.006 | 0.295 ± 0.010 |
| (H ₁) Inside Height | 0.350 | 0.380 | 0.495 |
| (W _o) Overall Width | 0.540 ref. | 0.540 ref. | 0.600 ref. |
| (W ₁) Inside Width | 0.490 | 0.490 | 0.550 |
| (W _c) Channel Width | 0.210 | 0.210 | 0.170 |
| (W _T) Top Width | 0.350 | 0.310 | 0.300 |
| (L) Length | 20.073 ± 0.06 | 20.073 ± 0.06 | 20.073 ± 0.06 |